

# SCHOOL ZONE SPEED CAMERAS

CECILE MALIK  
CITY COUNCIL STUDY SESSION  
FEBRUARY 28, 2022

---

AUBURN  
VALUES

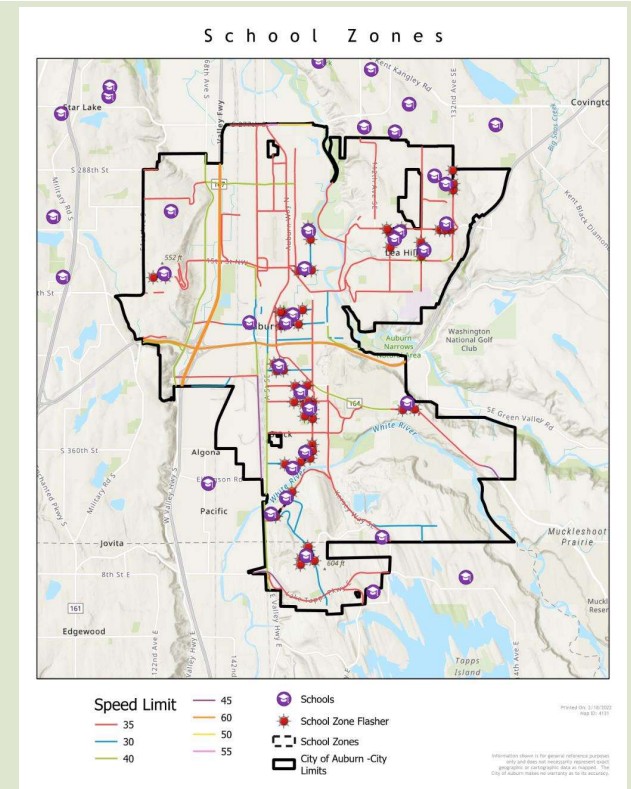
S E R V I C E  
E N V I R O N M E N T  
E C O N O M Y  
C H A R A C T E R  
S U S T A I N A B I L I T Y  
W E L L N E S S  
C E L E B R A T I O N

# FOLLOW UP DISCUSSION

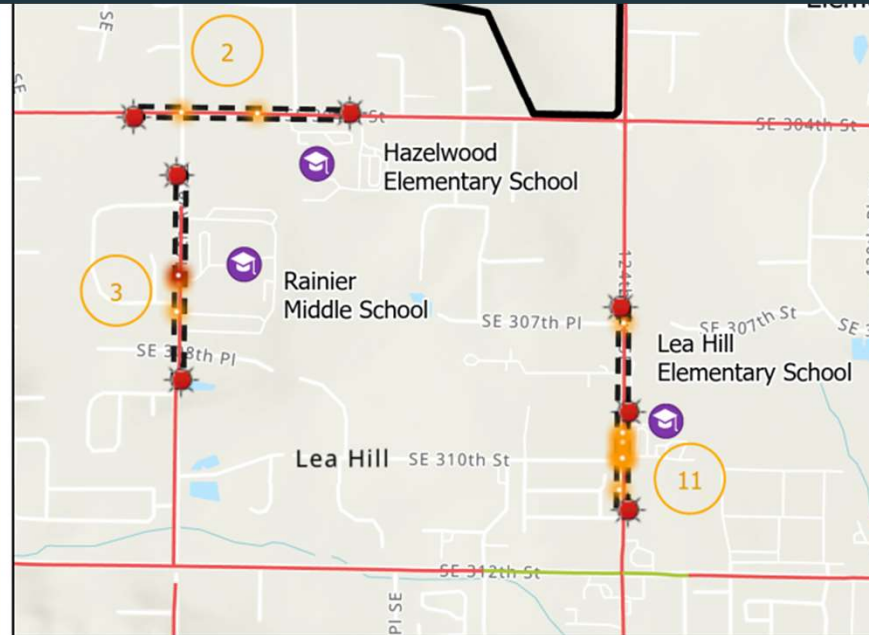
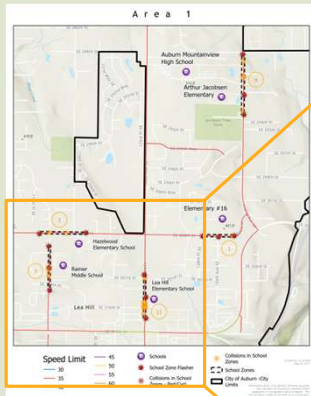
- School Zone Locations
- Crash History
- Why not other traffic calming approaches?
- Previous Photo Enforcement Program Revenues and Expenses
- Currently Proposed Photo Enforcement Program Cost Neutral Approach
- Preliminary Study Results
- Next Steps

# SCHOOL ZONE LOCATIONS

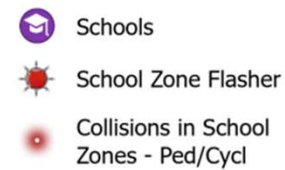
- Maps in Packet
- 22 school zones with beacons
- Map shows speed limits within school zones
- Crash history 2009 – 2019 while beacons flashing



# SCHOOL ZONE LOCATIONS



## Speed Limit



# CRASH HISTORY

- Collision reports from 2009 to 2019 reviewed and mapped
- Filtered to only include crashes that occurred in school zones with beacons while the beacons were flashing (active school zone)
- 93 crashes
- 9 crashes with pedestrians and bicyclists
- 26 injury crashes
  
- Annual reporting will include crash information
- Cannot wait for it to happen to justify slowing cars down

# PRELIMINARY STUDY RESULTS

- Study collected data over 2 days, during active school zone time, with active school zone flashers.
- Data collected number vehicles driving at or above 26 MPH in the 20 MPH school zones
- All school zones have violations
- Percentage of vehicles travelling at or above 26 MPH varies from 7% to 45%
- All school zones evaluated are on collector and arterial streets
- Over 5000 vehicles speeding at 26 MPH or above over the two-day study period

# WHY NOT OTHER TRAFFIC CALMING APPROACHES?

- Speed Cushions
- Raised Intersections/Crosswalks
- Bulb-Outs, Traffic Circles
- Narrower Lanes
- Speed Feedback Signs

# PREVIOUS PROGRAM REVENUE/EXPENSES

- Program issued Infractions from 2006 to 2014
- Vendor cost was \$4,870 to \$6,870 per camera per month (12 months per year)
- Total Revenues Collected = \$6,709,228
- Total Vendor Payments = \$5,078,272
- Net Excess Revenue Received = \$1,630,955
  
- Council included forecasted excess revenues in budget to fund other programs
- In later years of program, actual revenues were less than the forecasted revenues used to fund other programs



# CURRENT PROGRAM COST NEUTRAL APPROACH

- Pages 4 and 5 of Contract
- \$4,000 per camera per month (10 months per year)
- 25% of collected amounts set aside for City's cost to administer the program
- 75% of collected amounts paid to vendor, up to monthly fee
- When monthly revenues are below vendor cost, partial payment sent to vendor
- When monthly revenues exceed costs, pay vendor any missing payment up to vendor cost
- Annual Reconciliation: For the previous 12-month Period
  - Review the total revenues received against the total costs
  - City keeps 25% of collected amounts to pay our administrative costs
  - If remaining revenues exceed the Vendor costs, City pays any outstanding costs for the year.
  - If remaining revenues are less than the Vendor costs, City pays only up to the revenue amount received.
  - Any excess revenues are available for the City to use for other purposes (traffic calming, Police traffic enforcement, safety projects, etc)
  - Vendor can not claim additional payment once the year is reconciled regardless of future revenue collection.

# CURRENT PROGRAM COST NEUTRAL APPROACH

- Example (assuming two cameras):

	Year 1	Year 2	Year 3	Year 4	Year 5
# of Infractions	1000	800	600	400	200
Amount Collected	\$200,000	\$160,000	\$120,000	\$80,000	\$40,000
City Retains 25% to Cover Overhead	\$50,000	\$40,000	\$30,000	\$20,000	\$10,000
Vendor Standard Charge	\$80,000	\$80,000	\$80,000	\$80,000	\$80,000
Actual Amount Paid to Vendor	\$80,000	\$80,000	\$80,000	\$60,000	\$30,000
Net City Revenue	\$70,000	\$40,000	\$10,000	\$0	\$0

*Cost neutral plan is on all cameras together, not per each camera.*

# NEXT STEPS AND QUESTIONS

- March 7, Resolution 5653
- Execute Contract
- Complete Study Analysis and Select Locations
- Implement by September
  
- Questions?