



**KING COUNTY ACCESS EASEMENT
OVER CITY OF AUBURN PARCEL 030140-2420
RESOLUTION 5623**

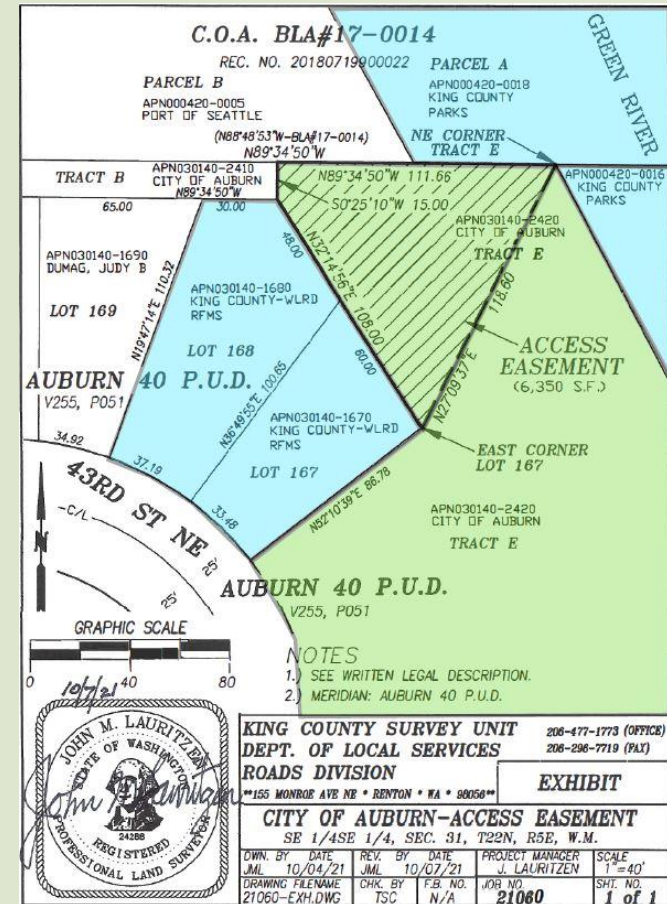
Josh Arndt - Legal Department

AUBURN
VALUES

S E R V I C E
E N V I R O N M E N T
E C O N O M Y
C H A R A C T E R
S U S T A I N A B I L I T Y
W E L L N E S S
C E L E B R A T I O N

PURPOSE

- Grant King County necessary access across City of Auburn property to property King County owns along the Green River
- Blue = King County property
- Green = City of Auburn property
- Hatched = Easement Area



GENERAL LOCATION

■ North Auburn, West side of Green River



JOSH ARNDT
REAL ESTATE MANAGER
JARNDT@AUBURNWA.GOV
253.288.4325

Legal Department

**AUBURN
VALUES**

S E R V I C E
E N V I R O N M E N T
E C O N O M Y
C H A R A C T E R
S U S T A I N A B I L I T Y
W E L L N E S S
C E L E B R A T I O N