
AUBURN
VALUES

PSRC VISION 2050 UPDATE

COUNCILMEMBER JOHN HOLMAN
ANTHONY AVERY, AICP, CNU-A
CITY COUNCIL STUDY SESSION
SEPTEMBER 9, 2019

S E R V I C E
E N V I R O N M E N T
E C O N O M Y
C H A R A C T E R
S U S T A I N A B I L I T Y
W E L L N E S S
C E L E B R A T I O N

Department of Community Development

Planning • Building • Development Engineering • Permit Center
Sustainability • Community Services • Code Enforcement

AUBURN'S PLACE IN CENTRAL PUGET SOUND

- Settled in the 1850's as a rural farm-based community halfway between Seattle and Tacoma.
- Auburn's character has evolved over time, from farmland to a railroad town, to an industrial village, to a small suburban city.
 - We are still evolving into what we will become.
- In the 1950's and 1960's, Auburn's population was approximately 10,000 people.
 - Today, over 84,000 people reside here – Same downtown footprint.
- Served by Sounder Commuter Rail, 27 minutes to Downtown Seattle.
 - PSRC VISION 2040 regional growth center centered on Auburn Station.

PUGET SOUND REGIONAL COUNCIL

- Established in 1956 as a collaborative endeavor of the four county Central Puget Sound metropolitan area. Adopted the role of Metropolitan Planning Organization as mandated by the Federal-Aid Highway Act of 1962.
- The agency's primary role is to plan for and distribute transportation funding from the federal government to local agencies.



PUGET SOUND REGIONAL COUNCIL

- Performs additional planning efforts such as economic development and growth management to guide effective deployment of transportation funding.
- In 1990 became the regional coordinating agency responsible for administering the Growth Management Act.

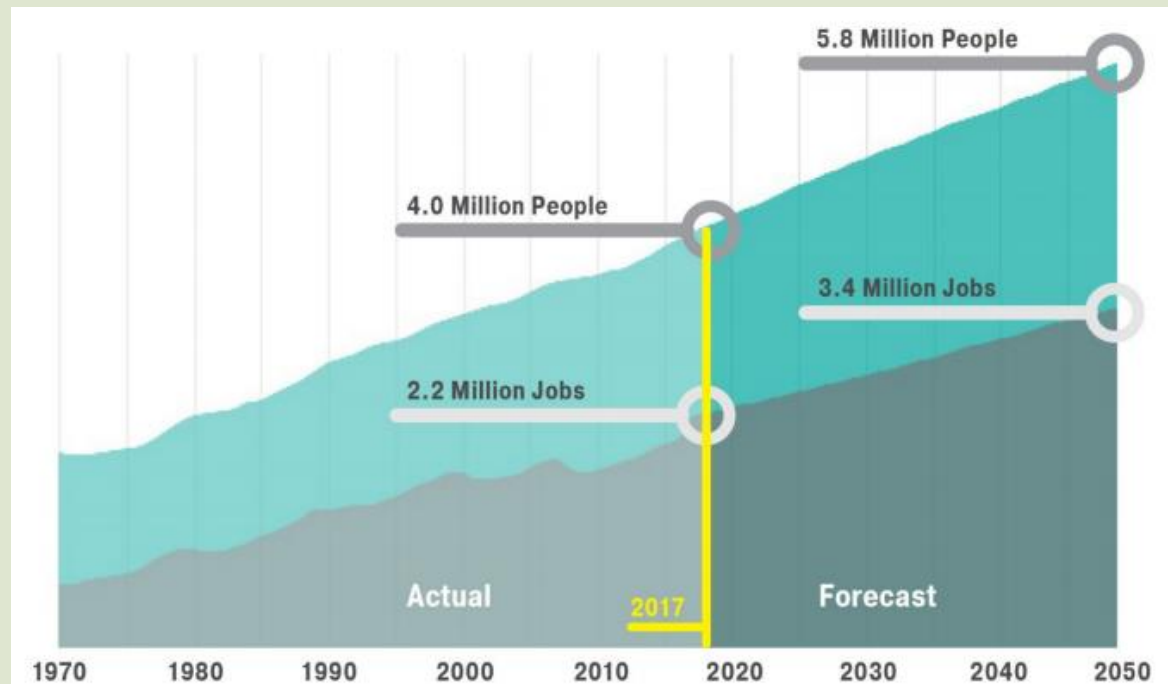


VISION 2040

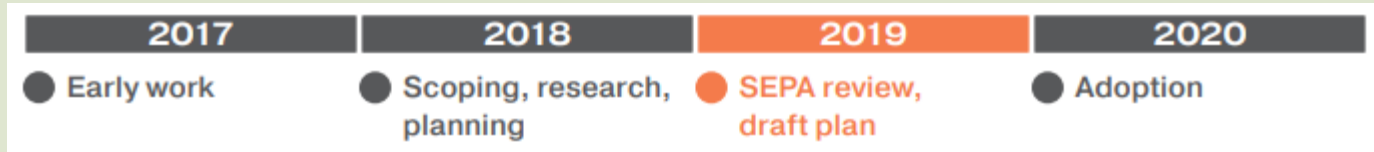
- Long range planning document to envision and guide growth and infrastructure investment.
 - Forecast population over 5 million people in Central Puget Sound by 2040
- Analyzes policies in housing, economic development, transportation, and the environment.
 - Identifies infrastructure investments that would contribute to the region's and its residents well-being and suggest a financing plan for investment.
- Updated every ten years.
- Supplemental Environmental Impact Statement ([SEIS](#)) finalized early 2019 evaluated

VISION 2050

- Changes and updates between Vision 2040 and Vision 2050
 - Update growth forecasts for the year 2050 and to the Regional Growth Strategy
 - Updated regional geographies
 - Updated framework to focus on growth centers and transit-oriented development
 - Regional Open Space Conservation Plan
 - Housing Affordability
 - Climate Change
 - Social Equity



VISION 2050



- Previous work include a draft Supplemental Environmental Impact Statement (SEIS).
 - [Draft Vision 2050](#) prepared July 19, 2019
 - The current draft reflects the identified preferred alternative, focusing growth in high capacity transit station areas
 - Currently in the public comment period until September 16, 2019
 - King County and Pierce County have prepared drafts for submittal
 - Auburn has not updated our position since submittal of public comment on April 29, 2019 for the Draft SEIS
- Next Steps
 - PSRC will review comments -> Make a recommendation to the general assembly -> Adoption of Vision 2050

VISION 2050



SERVICE • ENVIRONMENT • ECONOMY • CHARACTER • SUSTAINABILITY • WELLNESS • CELEBRATION

WHAT DOES VISION 2050 MEAN FOR AUBURN?

- The preferred alternative of Transit Focused Growth assumes 75 percent of the region's population and employment growth will occur within a quarter- to half-mile from current and planned high-capacity transit (HCT) station areas.
 - Auburn is home to one current or planned HCT station, Auburn Sounder Station
 - Priority to protect and preserve open space and forest land outside the Urban Growth Area (UGA)
 - Provide data and tools to assist with the implementation of the Vision 2050 plan
 - Regional coordination for enhanced transportation and mobility opportunities